

RXD 604 PLUS

Bakery oven



Ref. 710543



FUNCTIONS - FEATURES

- End of cycle alarm
- Humedad regulable 0/100%
- Cooking phases
- Recipe book
- Door switch
- Automatic preheating
- 3/4" water connection
- Safety thermostat
- Interior light
- Rotation inverter
- Equipped with 4 wire trays

TECHNICAL CHARACTERISTICS

Electric power 6300 W

Max temperature 260 °C

Weight 55 kg

Voltage 400 V-50/60 Hz

Connection Three Phase 3F+N+T

Internal dimensions (W)680x(D)470x(H)365 mm

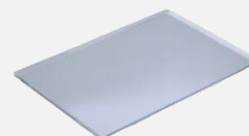
External dimensions (W)820x(D)800x(H)560 mm

Change to single phase optional

CAPACITY

4 trays 600x400

4 trays GN 1/1



RXD 604 PLUS

Specific accessories



RX 60/40 Stand

Ref. 710549



(W)810x(D)700x(H)850 mm

RX GN1/1 Stand

Ref. 710550



(W)810x(D)700x(H)850 mm

Wheels

Ref. 710286



Wheeled option

Fumes condenser kit

RX SERIES

Ref. 710551

(W)170x(D)70x(H)400 mm

RX H2O SERIES

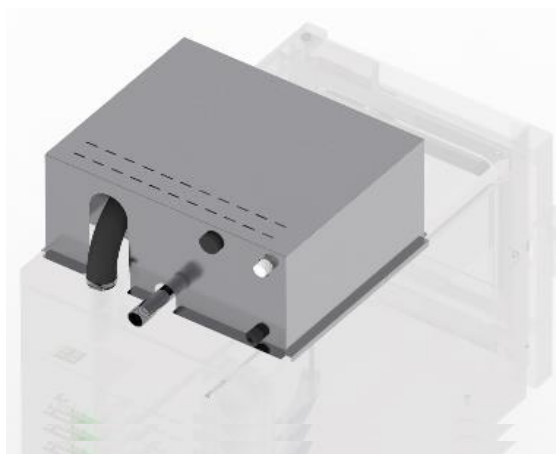
Ref. 710552

(W)720x(D)85x(H)450 mm

RX DUO SERIES

Ref. 710553

(W)580x(D)120x(H)180 mm



RX 60/40 Superposition kit

Ref. 710556



(W)820x(D)800x(H)40 mm

RXD 604 PLUS



DECLARACIÓN UE DE CONFORMIDAD EU DECLARATION OF CONFORMITY

Directiva(s) del Consejo con la(s) que se declara conformidad:
Council Directive(s) to which conformity is declared:

DC 2014/35/EU + DC 2014/30/EU + DC 2011/65/EU

Aplicación de las Normas:
Application of the Standards:

UNE-EN 60335-1:2012 + AC:2014 + A11:2014 + A13:2017 + A14:2014 +A2:2020 + A1:2020; UNE-EN 60335-2-42:2004 + Corr:2007 + A1:2008 + A11:2012; UNE-EN 55014-1:2017 + A11:2021; UNE-EN 55014-2:2015; UNE-EN 61000-3-2:2014; UNE-EN 61000-3-3:2013 +A1:2020

Fabricante / *Manufacturer's*
address:

**FM CALEFACCIÓN S.L.
CIF: B-14343594**

Dirección / *Manufacturer's*
address:

**CTRA. de Rute km.2.700, C.P.:14900, Lucena
Cordoba, Spain**

Tipo de aparato / *Type of device:*

HORNO / OVEN

Marca / *Trade.:*

FM CALEFACCIÓN

Modelo / *Model no.:*

RXD 604 PLUS N/S: 21XXXXXXXXXX

Nosotros, los abajo firmantes, declaramos bajo nuestra exclusiva responsabilidad que el equipo especificado cumple con la(s) Directiva(s) y Norma(s) mencionadas

We, the undersigned, hereby declare under our sole responsibility that the specified equipment is in conformity with the above Directive(s) and Standard(s)

Lugar / *Place:* **Lucena**

Firma / *Signature:* **B-14343594**

Fecha / *Date:* **01/01/2021**



RXD 604 PLUS



TECHNICAL CHARACTERISTICS		CONNECTIONS	
Net Weight (oven)		1	Electrical connection
Gross Weight (oven+packaging)		2	Hot gases outlet Ø30 mm
Supply voltage	400 Vac - Three Phase	3	Safety thermostat reset
Frequency	50/60 Hz	4	Safety distance ≥ 120 mm
Power cable	Hose 3F+N+T 4 mm ²	5	Drainage Ø30 mm
Noise level	Below 70 dB	6	Water inlet 3/4"
Electric power	6300 W		
Thermal power	6000 W		

*Dimensions in mm

